

BAZAAR

TALKING POINTS

Edited by CHARLOTTE BROOK

JOIE DE VIVRE!

New furnishings inspired by the French
artist Sonia Delaunay. Plus: Beatrix Potter's rural
roots; great female painters rediscovered; in praise of
cherry blossom; and Kim Jones on the Bloomsbury Group

'Orpha'
fabric by
Ceraudo



ART

REWRITING HISTORY

A trio of exhibitions gives overdue recognition to some of the world's most brilliant creative women

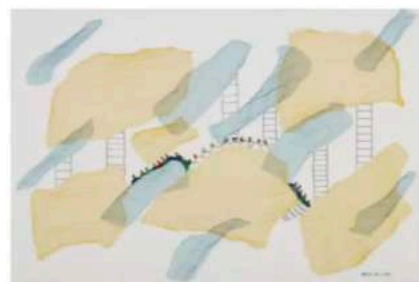
By BROOKE THEIS



Clockwise from above: 'The Call' (1953) by Toshiko Okanoue. 'Gadjunbattit (Life Lines)' (2009) by Britta Marakatt-Labba. 'Purple and Rose: The Lange Leizen of the Six Marks' (1864) by James Abbott McNeill Whistler

A painter in her own right, Joanna Hiffernan was also the maverick artist James Abbott McNeill Whistler's studio manager, muse, lover and companion. Through 70 of his canvases, the Royal Academy reveals Hiffernan's influence on her friend's life and work from the 1860s until her death in 1886 at the age of just 46. Meanwhile, Tate Modern shines a light on hitherto-overlooked names of the 20th century such as Toshiko Okanoue, Simone Breton, Nusch Eluard and Lula Vuco, who profoundly influenced the Surrealist movement but have historically been overlooked as scribes or sidelined as inspiration for their male contemporaries. In a smaller – but just as perfectly formed – display at Ikon in Birmingham, the Swedish artist Britta Marakatt-Labba's luminous depictions of fishermen, shamans and children sledding in the snow arrive in a solo exhibition that will surely enchant all who visit.

'Whistler's Woman in White' is at the RA (www.royalacademy.org.uk) from 26 February to 22 May. 'Surrealism Beyond Borders' is at Tate Modern (www.tate.org.uk) from 24 February to 29 August. 'Britta Marakatt-Labba: Under the Vast Sky' is at Ikon Gallery (www.ikon-gallery.org) from 23 February to 29 May.



The Orpha collection, from £540 Ceraudo

'Colour is the skin of the world,' Sonia Delaunay once said. Revitalise your home with bold new fabric and furniture from Victoria and Emily Ceraudo, the half-Italian, London-based sisters who run an eponymous design brand.

Inspired by the French artist's joyous, graphic paintings, the Orpha collection is named after orphic cubism, the movement that focused on bright, abstract works, which Delaunay helped to pioneer.

www.ceraudo.com



www.harbershazaar.com/uk